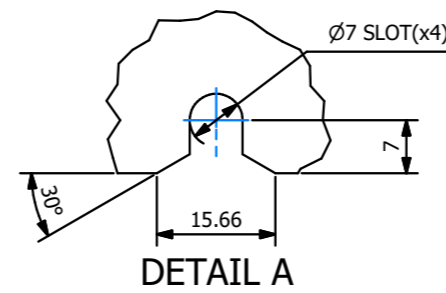
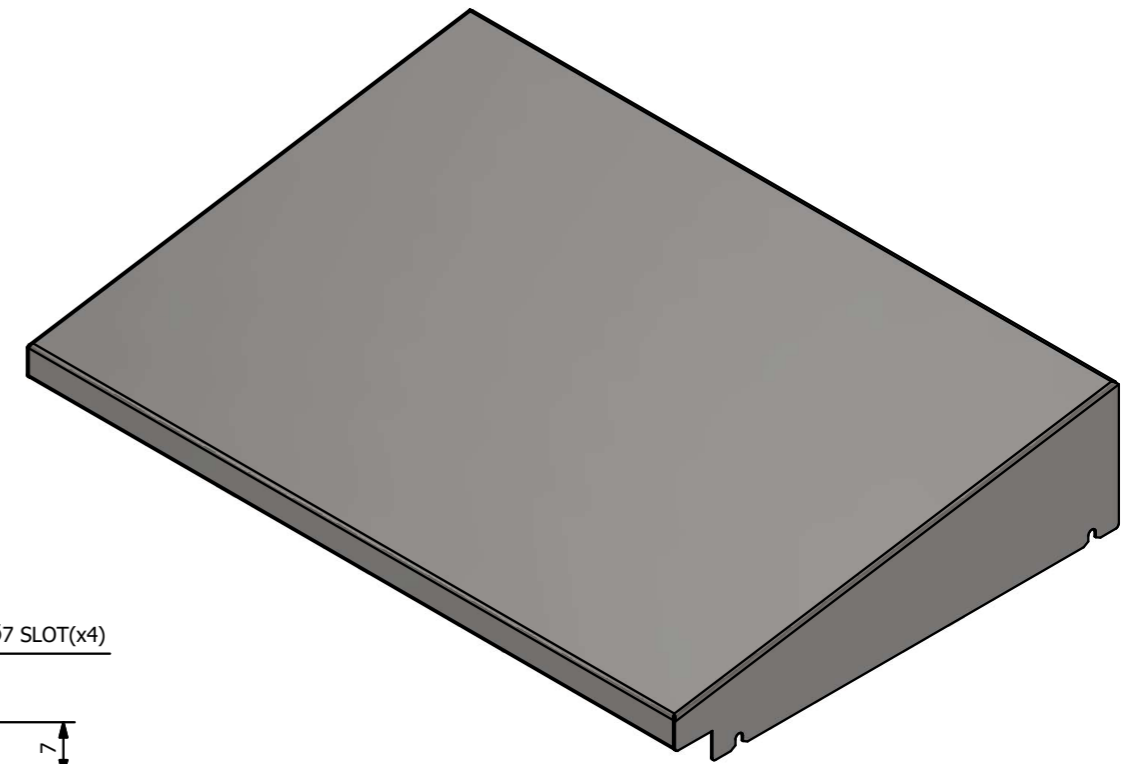


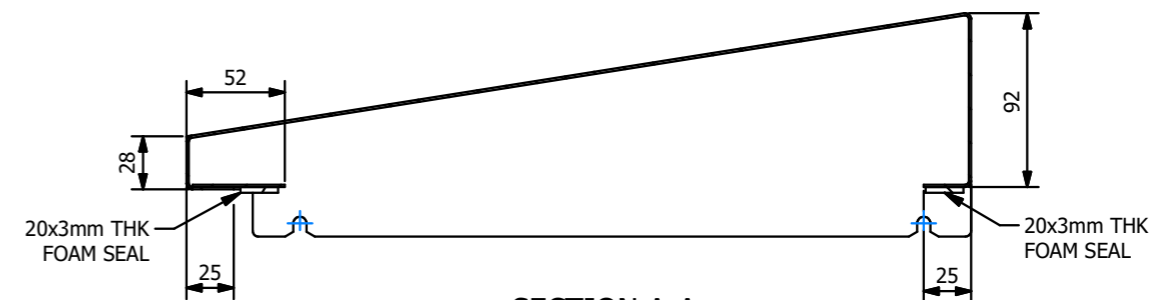
TOP VIEW



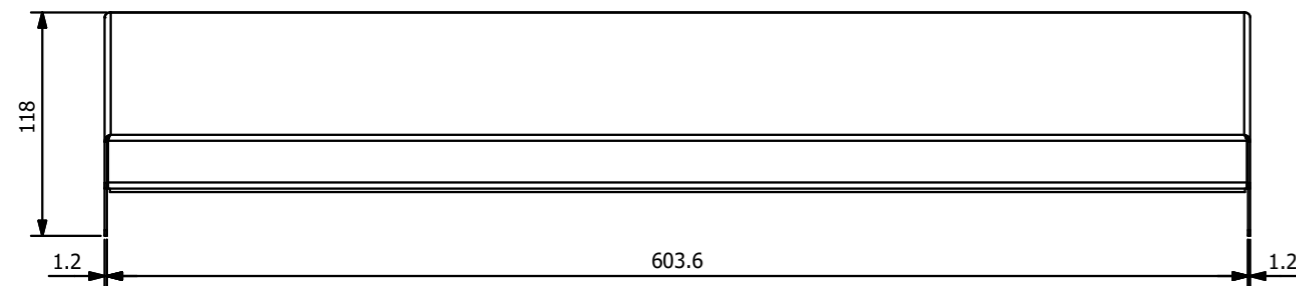
DETAIL A



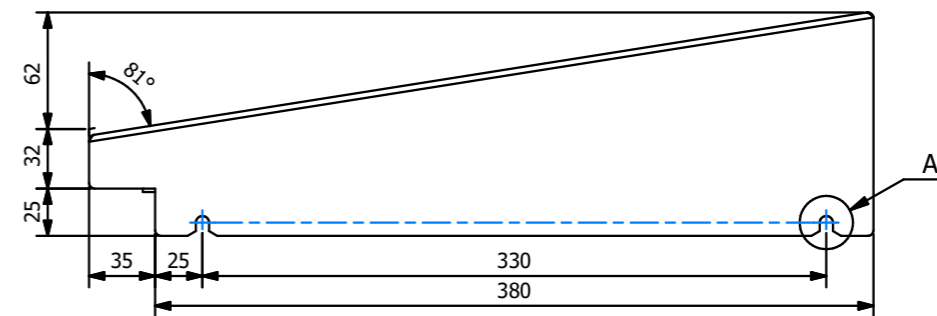
ISOMETRIC VIEW



SECTION A-A



FRONT VIEW



SIDE VIEW

A.E. Stainless Direct
 P: 1300 533 292
 A: 4/36 Devlan St, Mansfield QLD 4122
 E: info@aestainlessdirect.com.au
 W: aestainlessdirect.com.au

ALL DIMENSIONS ARE IN MILLIMETRES.
 UNLESS OTHERWISE SPECIFIED
 TOLERANCES:
 GENERAL: ± 0.5 HOLE CRS: ± 0.2
 HOLE Ø: ± 0.1 ANGLE: ± 0.5°
 CORNER RADS = MATERIAL THICKNESS

CLIENT:	AE STAINLESS DIRECT	
DRAWING TITLE:	SS Rain Hood 600x400	
MATERIAL:	SS316N4	THICKNESS: 1.200 mm
FINISH:		
INGRESS PROTECTION RATING:		

REV	DATE	DRN	CHK	DESCRIPTION
-	-	-	-	-
-	-	-	-	-
-	-	-	-	-
0	21.09.20	C.H.	R.K.	ISSUED FOR INFORMATION

DO NOT SCALE
 THIS DRAWING INFORMATION AND ALL TECHNICAL DATA ENCLOSED HEREIN IS THE PROPERTY OF A.E. STAINLESS DIRECT AND IS NOT TO BE USED FOR REPRODUCTION, MANUFACTURE PROCUREMENT DISCLOSURE TO ANY PARTY WITHOUT THE WRITTEN CONSENT OF A.E. STAINLESS DIRECT

SURFACE AREA 956693.636 mm²

DRAWN:	C.H.	21/09/2020
CHECKED:	R.K.	21/09/2020
DESIGN APPROVAL:		
PROJECT APPROVAL:		

DRAWING NUMBER:	SS-RH-600x400
REVISION:	0
SCALE:	1 : 4
SIZE:	A3
SHEET NUMBER:	1 OF 1